

# Global Platform for Action on Sustainable Energy in Displacement Settings (GPA)

Terms of Reference

## 1. Introduction to the GPA

The [Global Platform for Action on Sustainable Energy in Displacement Settings \(GPA\)](#) is the global initiative aimed at promoting actions that facilitate access to sustainable, affordable, modern and reliable energy in displacement settings, as laid out in the [Global Plan of Action Framework](#). The GPA strives to remove barriers to energy access in humanitarian settings by providing a collaborative agenda for energy, development, and humanitarian partners to deliver concrete actions of [Sustainable Development Goal 7 \(SDG7\)](#) for displacement contexts, ensuring that displaced persons, host communities, and associated humanitarian response mechanisms have access to affordable, reliable, sustainable, and modern energy services by 2030. The GPA promotes and contributes to the transition of humanitarian sector to renewable and sustainable energy. Hosted by the [United Nations Institute for Training and Research \(UNITAR\)](#), the GPA Coordination Unit (CU) galvanises collective action towards the GPA's realisation and manages the day-to-day activities as the secretariat of the Platform.

### 1.1 Vision and Mission

**Vision:** Displaced persons, host communities, and associated humanitarian response mechanisms have access to affordable, reliable, sustainable, and modern energy services by 2030.

**Mission:** Delivering collective change on energy in displacement settings by providing supporting services to mainstream sustainable, affordable, and reliable energy access for crisis-affected communities and those that serve them.

### 1.2 Objectives

Members of the GPA work together to deliver the goals and recommendations outlined in the [GPA Framework](#) by:

1. **Improving coordination** of energy in displacement settings through streamlined and strengthened coordination processes at the country and global levels;
2. **Providing policy and advocacy support** at the local, national and international levels to ensure that humanitarian response meets the energy needs of both displaced and host communities, and national energy and development planning processes are inclusive of the energy needs in displacement settings;

3. Exploring avenues to increase and diversify funding and improve existing financing mechanisms for energy programming in humanitarian responses by developing innovative financing mechanisms and approaches to funding sustainable energy access programming and energy infrastructure, in partnership with funders and lenders;
4. **Enabling sustainable delivery of energy** in displacement settings by strengthening the humanitarian sectors expertise, capacity, and knowledge on sustainable energy, and partnering, where practical to do so, with experienced development and private sector actors; and
5. **Supporting harmonisation of humanitarian-energy data** collection, analysis, reporting and MEL processes, and building the collective evidence base of best practices and learning from previous projects to support collective sector learning.

Activities aimed at achieving these objectives are expected to be carried out collaboratively with displacement-affected communities and relevant in-country stakeholders. This approach ensures a deeper understanding of the context and energy needs of both communities and humanitarian operations, promotes inclusive approaches to delivering energy solutions, and showcases the effective implementation of appropriate energy access measures in displacement settings.

## 2. GPA Structure

The GPA is facilitated by a support structure to deliver its goals, comprising of the [Steering Group \(SG\)](#), Coordination Unit (CU), [Humanitarian Energy Exchange Network \(HEEN\)](#), [Working Areas](#) and Task Forces, illustrated in the diagram and further detailed in the section below. This multifaceted approach underscores the commitment of the GPA to fostering meaningful collaboration among diverse stakeholders, thus addressing the critical need for sustainable energy solutions in displacement settings. The GPA adheres to a dynamic [work plan](#) that its partners execute individually and collectively, subject to annual review and adaptation.

At the Strategy Level, the SG guides and implements GPA's global mission and is comprised of key UN agencies, international non-governmental organisations (INGOs), research institutes, and think tanks. Each year, the SG members and CU establish global priority activities to drive the GPA's agenda forward. The SG takes the lead in fostering collaborative efforts, working with relevant network partners such as private companies, donors, and host governments to achieve joint outcomes from these activities.

At the Operational Level, the GPA CU, hosted at UNITAR, executes the coordination of activities of the GPA. Its responsibilities include core functions such as promoting change, convening multi-stakeholder processes, and improving coordination and capacity within the humanitarian energy sector. The GPA CU oversees the management and delivery of activities outlined in the GPA Work Plan across five working areas, covering [Planning and Coordination](#); [Policy, Advocacy, and Outreach](#); [Innovative Finance and Funding](#); [Technical Expertise and](#)

[Capacity Building](#); and [Data, Research and Evidence](#). Additionally, the CU, together with partners, manages the administration of task forces addressing emerging topics and collaborates on programmes developed with key partners in the sector.

At the Implementation Level, the [HEEN](#) serves as the primary platform for coordination and collaboration among humanitarian and development agencies, INGOs and implementing partners working on improving sustainable energy access of displacement-affected communities at the country or regional level. Managed by the GPA CU, HEEN supports not only a holistic approach to programming, but also fosters inter-agency collaboration including joint assessments, evaluations, knowledge sharing, strategic planning, program design, and project implementation.

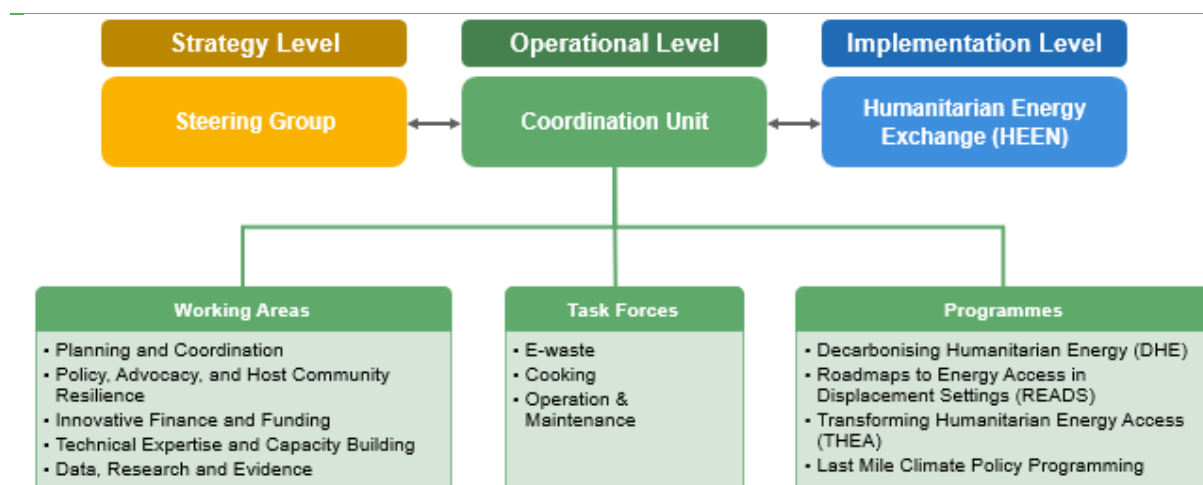


Figure 1: GPA Structure.

### 3. Become a Contributing Partner to the GPA

There are various pathways to become a **Contributing Partner to the GPA**. When committing to be a partner of the GPA, there is an implicit understanding that the individual and/or the organisation aims to work toward the goals and principles of the GPA. By doing so, they become a GPA Contributing Partner, allowing organisations to be linked on a Partnership Page on the GPA Website, where stakeholders can outline their work on humanitarian energy.

Individuals and organisations are invited to become a GPA member by contributing to ongoing processes facilitated under the GPA. The Terms of Reference outlining how to get involved in different GPA activities is listed in the Annex. By becoming a member, partners can contribute to one or more of the following working levels, as illustrated in the Figure 2.

- **For Global/Strategic Level Support and Setting the Collective Agenda, apply for the GPA Steering Group (SG):** The GPA SG consists of UN Agencies, INGOs and other development partners with humanitarian energy expertise and ambition to shape the global agenda. The role of the SG is to support, direct and stimulate systemic change on

how energy is delivered in the humanitarian response. The main activities of the SG are to align sector-wide strategy, track progress, identify gaps and opportunities for collective action, and support the management of the stakeholder network. The SG membership is reviewed yearly, and key partners committed to the global action agenda are invited to be a member on a needs basis. The SG convenes once a month and members are expected to contribute to the meetings with their updates and insights and further develop the sector.

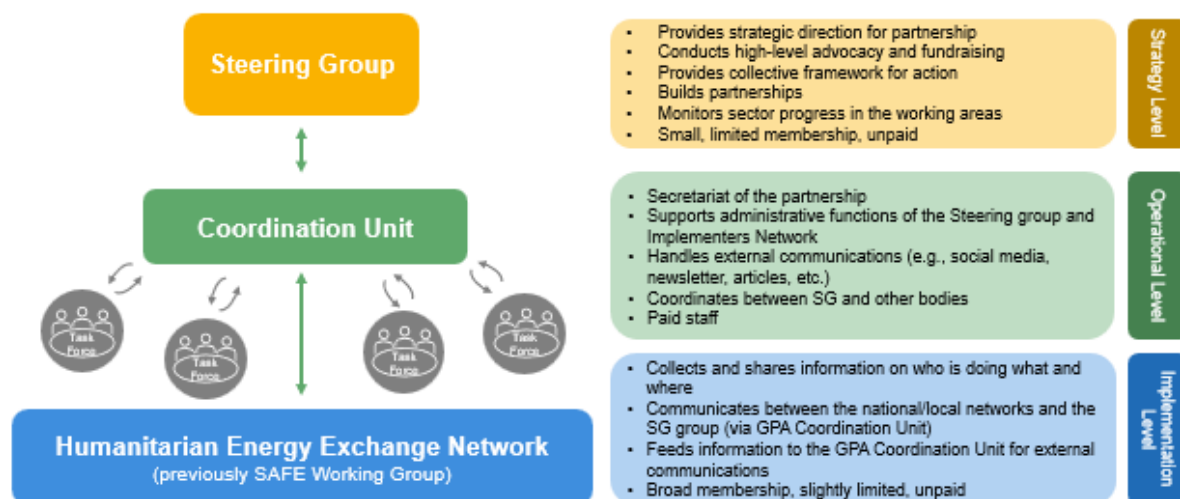


Figure 2: GPA Contributing Partners.

- **For Coordination and Knowledge Exchange, join the Humanitarian Energy Exchange Network:** The HEEN is the primary platform for coordination and collaboration among practitioners working in field/country operations on energy-related programming who provide local leadership, implement projects and humanitarian programmes. Managed by the GPA CU, HEEN is a dedicated space for practitioners to exchange knowledge, synthesise lessons learned from experiences, share best practices, express need for support from the members, and explore opportunities for collaboration between partners to develop effective energy programmes.
- **For Working/Thematic Support, join a GPA Task Force:** This includes humanitarian/development partners, member states, companies and researchers working collectively on topic-specific and output-focused activities (such as setting minimum energy standards, running global advocacy campaigns, or coordinating sector-wide e-waste efforts) and developing joint projects and partnerships that contribute to the GPA Outcome Areas. The frequency of the meetings will be established by the Task Force lead.

## Contact

For further inquiry regarding the GPA and how to get involved, please reach out to the Head of the GPA Coordination Unit, Mark Gibson at [Mark.Gibson@unitar.org](mailto:Mark.Gibson@unitar.org) or [energy@unitar.org](mailto:energy@unitar.org).

## ANNEX

### Annex 1. GPA Steering Group

#### Background

The **GPA Steering Group (SG)** comprises leading UN, INGO and other development partners with humanitarian energy expertise working collectively to mainstream sustainable energy in displacement situations in policy and practice, realising the vision of the [GPA Framework](#).

The SG is the primary body responsible for the overall direction, development, and implementation of the GPA at the global level. It plays a critical role in advocating for the objectives of the GPA to key stakeholders and is responsible for reviewing and endorsing the global GPA strategy and work plan. The SG co-leads or participates in GPA Task Forces, provides support to global policy and advocacy efforts, plays an active coordination and expert content role through leading on collective activities, and supporting the Coordination Unit (CU) in monitoring and overseeing collective progress facilitated through the GPA.

#### Membership

The GPA SG is comprised of the main UN and INGO agencies working on SDG7 in displacement settings globally. Additional organisations may apply for membership in the SG, with a maximum of 20 organisations. Applications for membership are received and handled by the GPA CU. New members must meet all eligibility criteria below and be approved by a majority vote of the SG. Each organisation may only cast one vote, even if it is represented by more than one individual, and membership is reviewed annually. The eligibility criteria for the GPA SG are as follows:

- International organisation - operating in several countries.
- Providing relevant human resources to support activities of the GPA, and appointment of a replacement if transitioning out of role.
- Operational mandate or proven track record for contribution to the development, implementation and monitoring the Work Plan.
- Actively learns and shares relevant information on sustainable energy in displacement settings.
- Present the GPA and relevant results within the organisation, as well as in other fora.
- Support fundraising for sustainable energy for displacement, and approval or engagement from senior management.
- Impartial and neutral to type of energy (no pushing of agendas for a certain solution).
- Commitment to sustainable energy delivery models.
- Commitment to the guiding principles of the Global Plan of Action.

A statement of ambitions for involvement, potential ways to implement the GPA activities in current work and practical ways of contribution to the Steering Committee is requested from all members of the SG. The desired output from this requirement is to record members commitment to taking action and streamlining the GPA into their work for efficient and purposeful collaboration.

## Operations

The SG meets virtually each month to collaborate and coordinate action on priorities, and yearly to conduct an in-depth review of the GPA Activities. The existing GPA SG consists of UNHCR, IOM, WFP, FAO, UNDP, UNEP, SEforALL, Clean Cooking Alliance, GIZ, Mercy Corps, Practical Action, SNV, Chatham House and MECS. Updated information on the GPA SG can be found online [here](#).

## Objectives and Key Activities

### 1. Conduct advocacy

- Increase the organisational, political, and financial prioritisation of energy in displacement settings through targeted advocacy messaging and education.
- Support the field working groups in conducting advocacy at the local level, such as through community mobilisation, supporting behaviour change, and developing communication materials.
- Develop and leverage strategic partnerships with trusted advocacy organisations and journalists.
- Implement the GPA advocacy strategy at high-level events.

### 2. Mobilise resources

- Explore sources of funding and build contacts with relevant donors as a network.
- Collaborate on joint proposals for humanitarian energy coordination, research, and implementation.
- Provide information to SG members about funding opportunities, requirements, and processes.
- Educate donors on needs, gaps, and opportunities regarding energy access in displacement settings.
- Provide relevant information and recommendations to the donor community on how and where donor funds for energy activities can be most effective.

### 3. Build human resource capacity of partners and key stakeholders

- Conduct training and hold workshops on energy in displacement settings for relevant stakeholders including field staff (e.g., programme officers), donors, partners, and government officials.

- In collaboration with experts, support the capacity building of relevant stakeholders and suppliers.

## Leadership and Contact

The GPA SG is convened and facilitated by the GPA CU, a full-time, staffed team hosted at UNITAR. The SG advises the CU on setting high-level goals for the humanitarian energy sector, tracking progress, and setting GPA work plan. Organisations and partners curious to learn more about the GPA Steering Group and Coordination Unit are invited to contact [energy@unitar.org](mailto:energy@unitar.org).

## Annex 2. Humanitarian Energy Exchange Network (HEEN)

### Background

The Humanitarian Energy Exchange Network (HEEN) is the central platform for coordination and collaboration between humanitarian and development agencies working on improving sustainable energy access of displacement-affected communities at the country or regional level. The HEEN builds upon the Safe Access to Fuel and Energy (SAFE) Humanitarian Working Group with its focus on the practical and operational level humanitarian energy programs in countries that lack an existing coordination mechanism among the humanitarian and development agencies. In 2020, the GPA and SAFE structures agreed to join forces to strengthen the link between global and field levels and improve knowledge and expertise sharing among practitioners. The HEEN meets monthly, in which the practitioners exchange knowledge and expertise, synthesise lessons learned from experiences, express the need for supports from the network, and explore opportunities for collaboration to develop sustainable energy programmes. The HEEN supports not only a holistic approach to programming, but also fosters inter-agency collaboration including joint assessments, evaluations, knowledge sharing, strategic planning, program design, and project implementation.

### Membership

Membership in the HEEN is open to all relevant stakeholders contributing to energy access for displacement-affected communities. Member organisation representatives are typically from (but not limited to) the organisation's headquarter offices. Interested organisations can join the HEEN by sending an email to Elif Gul Demir ([elif.demir@unitar.org](mailto:elif.demir@unitar.org)) with a filled in [HEEN Membership Application Form](#). Membership in the HEEN requires a simple majority approval vote by the current members. Each organisation may only cast one vote, even if it is represented by more than one individual, and membership is reviewed annually.

### Operations

The HEEN holds an online meeting for all members every month. The HEEN holds either a coordination or learning session at each meeting, depending on the requests from the network and the availability of presenters for the learning sessions.

### Objectives and Key Activities

#### 1. Improve coordination and share information and knowledge

- Exchange and share information during regular monthly calls and annual in-person (if possible) strategic planning meetings.
- Maintain and update mapping of the 4Ws (Who is doing What, Where, When) in key areas related to energy for displacement-affected communities.



- Identify and document key achievements, best practices, lessons learned, and other information on the effective mechanisms to address energy needs and challenges to be utilised for future planning and programming.
- Support connection with and learning from private sector actors to increase public-private partnerships and more effective humanitarian energy programming.

## 2. Build evidence through consistent monitoring, evaluation and learning activities

- Document and share lessons learned from ongoing and previously implemented energy projects and programmes in humanitarian contexts.
- Support partners by providing common energy and humanitarian indicators to integrate into planned and ongoing programming.
- Support commissioning of independent evaluations that build evidence on impacts and inform the humanitarian sector on improved ways of working.

## 3. Provide technical support, tools, and guidance for implementation

- Serve as a technical resource to governments, INGOs, and practitioners, using lessons learned captured through the HEEN and other key resources (e.g. IASC [Matrix](#) and [Decision Tree](#)).
- Provide technical support and advisory to country or field-level working groups and implementing organisations (e.g. providing standard working group TOR templates, coordinating and building partnerships, providing good practice approaches, etc).
- Coordinate with the NORCAP Experts for effective programming.
- Disseminate relevant guidance and tools to practitioners in member and relevant non-member groups.
- Develop new guidance and tools, as needed, to facilitate quality program design and implementation.

## Leadership and Contact

The HEEN is chaired by one or two member organisations for one-year terms, with the option of renewal. The appointment is determined by approval from the majority of the network members in December each year and takes effect at the start of each year. The chairs are responsible for managing and coordinating the network, which includes leading discussions, organising meetings, and drafting group documents including strategies, terms of references, agendas, and meeting minutes. Chairing organisations also manage roles and responsibilities for joint deliverables, follow up on deadlines with members, and promote information sharing among members. Chairs serve as the main points of contact for all members of the HEEN.

For additional information regarding the HEEN, please contact Elif Gul Demir ([elif.demir@unitar.org](mailto:elif.demir@unitar.org)).

## Annex 3. GPA Task Forces

A **GPA Task force** is a task-oriented, output focused and time-bound structure contributing to the objectives of the GPA and recommendations in the [GPA Framework document](#). A Task Force can be initiated by a GPA Partner with support from the Coordination Unit and Steering Group to address emerging needs in the sector. To initiate a task force, a lead partner with dedicated resources or capacity is responsible for developing the idea with the GPA CU through a clear TOR, outlining the following components:

- Activity Title
- Proposing/Lead agency(ies)
- Summary (rationale for activity, issue or gap the project aims to address, objectives, and which thematic area of the GPA the working group contributes to)
- Proposed participants (types of stakeholders desired and stakeholders who have already agreed to participate should the proposal be approved)
- Duration and Key Milestones (*deliverables and timeline*)
- Resource requirements (short overview of activity budget in financial, human resource, or in-kind service contributions, and how the resources will be met)
- Process (section detailing the main project deliverables and process for delivery, including when input from the GPA leadership or partners are requested, as well as any previous consultation with other agencies, related institutions or sector initiatives)
- Outputs (list of deliverables and indication of GPA logo use)

Throughout the operational lifetime of the Task Force, a leading focal point reports on updates to the GPA Steering Group and Coordination Unit on a needs-basis via the monthly GPA Steering Group meetings, and relevant outreach material through GPA communications channels.

### The GPA is steered by



### The GPA Coordination Unit is supported by

